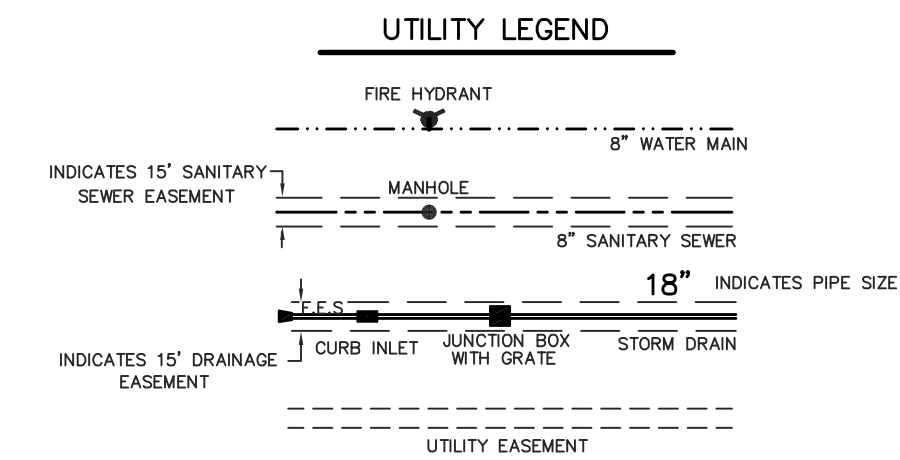
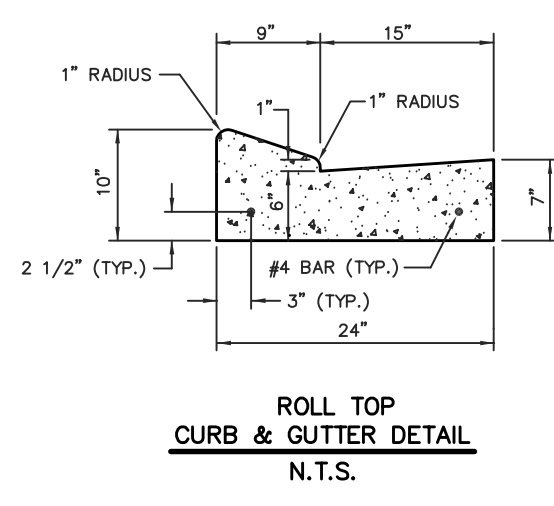
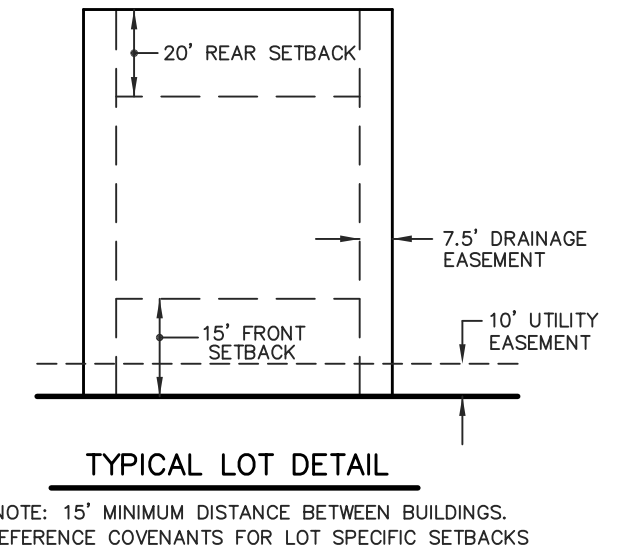


CENTERLINE CURVE DATA

Ⓐ Δ = 13°44'46"	Ⓑ Δ = 169°14'33"	Ⓒ Δ = 01°16'21"
D = 22.91831'	D = 19.08659'	D = 11.45816'
R = 250.00'	R = 300.00'	R = 500.00'
L = 59.98'	L = 100.75'	L = 11.10'

NUMBER	DIRECTION	DISTANCE
L1	S 21°25'48" E	37.42'
L2	S 82°49'06" E	105.35'
L3	S 76°01'29" E	82.18'
L4	S 61°54'17" E	40.86'
L5	S 16°44'33" E	88.44'
L6	S 10°48'55" W	96.21'
L7	S 84°07'50" W	86.68'
L8	S 82°16'55" W	76.82'
L9	N 39°19'53" W	94.90'
L10	S 85°09'38" W	44.05'
L11	S 24°59'46" W	24.28'
L12	S 25°50'14" E	34.41'
L13	S 55°11'24" E	48.20'
L14	S 34°27'00" E	77.85'
L15	N 75°10'05" E	105.81'
L16	N 62°55'43" E	113.29'
L17	N 76°56'28" E	36.19'
L18	S 70°34'46" E	40.71'
L19	S 13°23'18" E	50.72'
L20	N 32°35'17" E	8.67'
L21	N 06°45'23" W	50.69'
L22	N 21°03'26" W	18.54'
L23	N 42°47'57" E	39.81'
L24	N 55°15'24" E	81.34'
L25	S 50°45'16" E	87.72'
L26	S 67°55'09" E	108.54'
L27	S 52°23'23" E	145.52'
L28	S 45°23'36" E	270.40'
L29	S 40°50'42" E	65.19'
L30	S 40°02'16" E	65.27'
L31	S 69°31'53" E	67.97'
L32	S 41°25'02" E	65.88'
L33	S 41°25'21" E	65.87'
L34	S 37°34'52" E	66.76'
L35	S 44°37'14" E	65.38'
L36	S 73°44'37" E	70.60'
L37	S 63°22'54" E	66.61'
L38	S 56°34'33" E	65.33'
L39	S 40°53'55" E	97.46'
L40	S 28°51'05" E	116.59'
L41	S 37°42'43" E	25.03'



DEVELOPER
LQR, LLC
749 OAKMONT PARKWAY
RIDGELAND, MISS. 39157

- NOTES:
- THIS SUBDIVISION LIES WITHIN THE LIMITS ESTABLISHED FOR ZONE "X" (NO SHADING) ACCORDING TO FIRM MAP NUMBER 2808C0395 F, EFFECTIVE MARCH 17, 2010.
 - DIMENSIONS ALONG CURVES ARE CHORD DISTANCES.
 - AREA = 25.01 ACRES +/-, MORE OR LESS.
 - CONCRETE MONUMENTS WILL BE PLACED AT ALL CORNERS OF THE SUBDIVISION POST-CONSTRUCTION.
 - COMMON AREAS AND EASEMENTS SHALL BE MAINTAINED BY THE HOME OWNERS ASSN. OR ADJACENT LOT OWNER, WHICHEVER IS APPLICABLE AS OUTLINED IN THE COVENANTS.
 - DATE OF FIELD SURVEY: 12-11-18
 - CONTOURS SHOWN ARE FROM A FIELD RUN TOPOGRAPHIC SURVEY. (NAVD 88 DATUM).
 - CURB RETURN RADII IS 20' EXCEPT FOR THE TIE-INS ALONG BRIDGE WATER DRIVE, WHICH IS 30'.

DRAWING NO. TRCT-B-5

H D LANG AND ASSOCIATES, INC.
POST OFFICE BOX 16085 JACKSON, MISSISSIPPI 39236
601-362-4886

PROJECT
PRELIMINARY PLAT
VILLAS OF BRIDGE WATER

LOCATION
SITUATED IN THE
OF SECTION 1,
TOWNSHIP 8 NORTH - RANGE 1 EAST,
MADISON COUNTY, MISSISSIPPI

DATE	REVISION	BY	DRAWN BY: D.L.M.
			DATE: 12-19-18
			SCALE: 1" = 100'
			PROJECT: PAGE:
			PROJECT NO.: 18-029